



LIVINGSPLACE

FERDINAND PLACE | | CAMDEN | NW1 8ER

£600 PER WEEK

LIVINGSPLACE
ESTATE AGENTS

FERDINAND PLACE |
CAMDEN | NW1 8ER
£600 PER WEEK

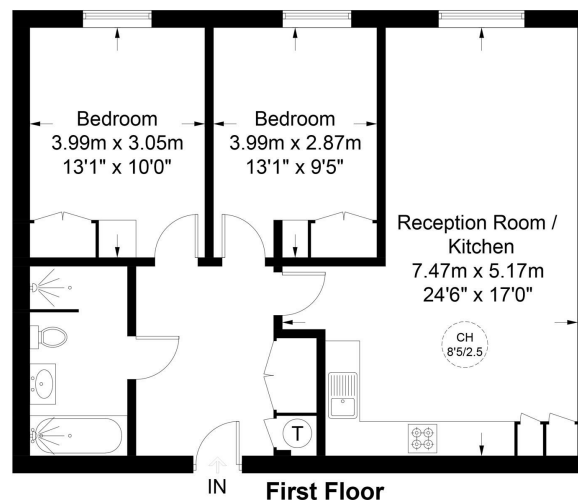
LIVING SPACE ARE PLEASED TO OFFER THIS STUNNING RECENTLY REFURBISHED, MODERN 2 BEDROOMS 1ST-FLOOR MODERN APARTMENT SITUATED IN A GREAT LOCATION IN CAMDEN TOWN AND WITHIN WALKING DISTANCE TO ALL THE TRENDY BARS, CAFES, AND RESTAURANTS. THIS PROPERTY IS OFFERED FURNISHED, CONTEMPORARY FIXTURES & FITTINGS THROUGHOUT, A MODERN FITTED KITCHEN WITH GRANITE WORKTOPS, WOOD FLOORS THROUGHOUT, A LARGE COMMUNAL ROOF TERRACE, AND BIKE STORAGE FOR ALL RESIDENTS. AVAILABLE 7TH MAY 2026

- ENERGY EFFICIENCY RATING : B
- 2 BEDS
- 1 RECEPTION
- FURNISHED
- SEPARATE WC
- GAS CENTRAL HEATING
- 2 BATHROOMS
- SHOWER
- LIFT
- CONVERSION



Ferdinand Place, NW1

Approximate Gross Internal Area = 767 sq ft / 71.3 sq m



This plan is for layout guidance only. Not drawn to scale unless stated. Windows and door openings are approximate. Whilst every care is taken in the preparation of this plan, please check all dimensions, shapes and compass bearings before making any decisions reliant upon them. (ID994713)



Energy Efficiency Rating		Current	Potential
Very energy efficient - lower running costs			
(92 plus) A			
(81-91) B			
(69-80) C			
(55-68) D			
(39-54) E			
(21-38) F			
(1-20) G			
Not energy efficient - higher running costs			
England & Wales	EU Directive 2002/91/EC		

COUNCIL TAX BAND C
EPC RATING

105 ST PAULS ROAD
ISLINGTON
LONDON
N1 2NA
020 7354 0505
INFO@LSEA.CO.UK